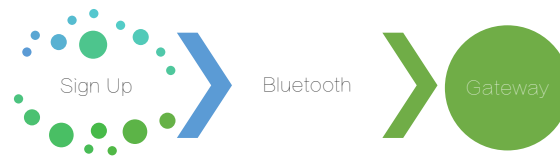


Philips EasyKey 9300 APP connection



1. Sign up a new account.

1.1. Download 「Philips Easykey」 APP

1.2. Sign up a new account and log in.

2. Connect Bluetooth.

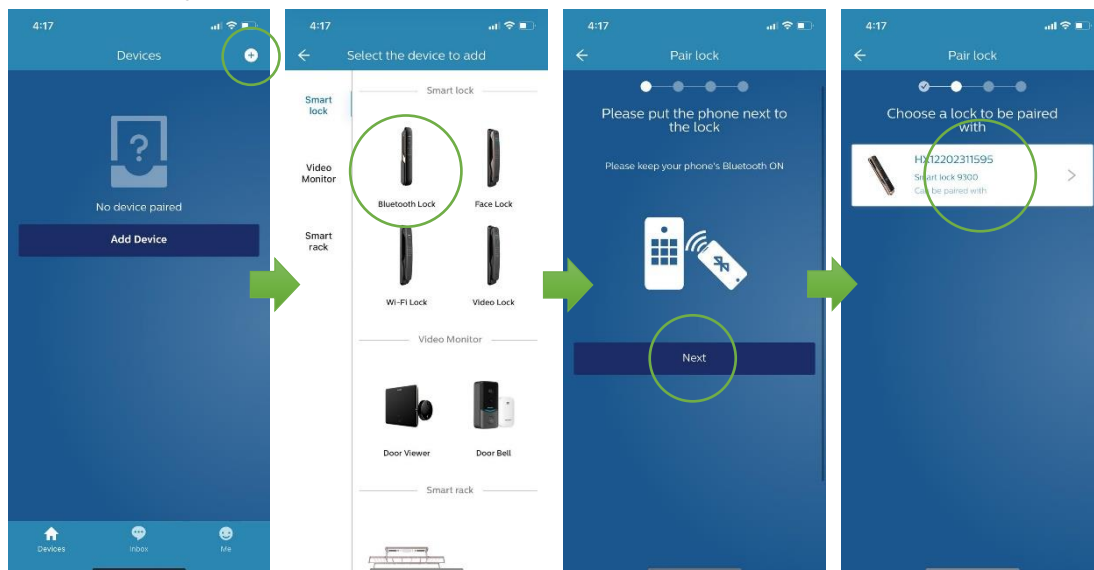
2.1 Entry * * 4 0 3 # on lock key pad to enable the Bluetooth module.

2.2 Click “+” on the Devices page.

2.3 Select “Bluetooth Lock” . 9300 is Bluetooth Lock.

2.4 Click “Next” .

2.5 Select your door lock.

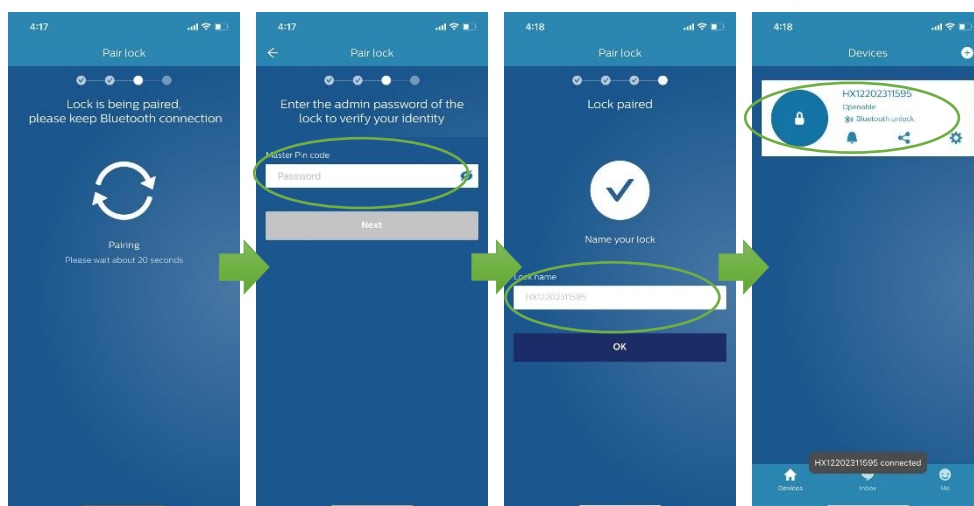


2.6 Bluetooth pairing

2.7 Enter the Master Code

2.8 After lock paired, name your door lock, then click “OK” .

2.9 Bluetooth unlock shown on the devices page. Press the blue circle button to unlock.

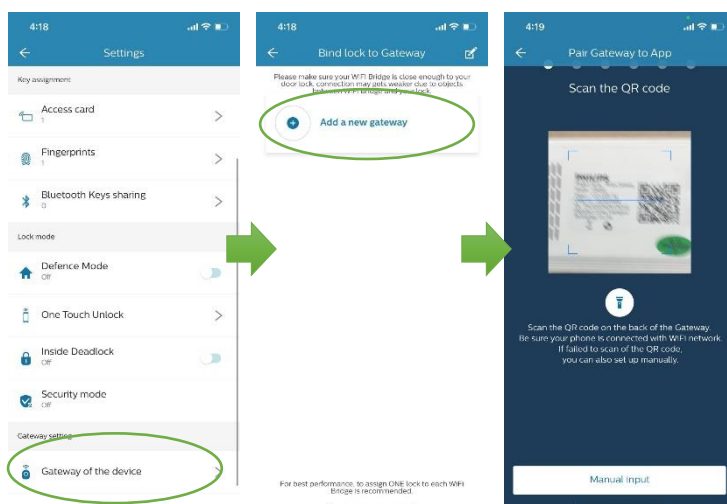


3. Connect gateway.

3.1 Go to setting, click “Gateway of the devices” .

3.2 click “Add a new gateway” .

3.3 Scran the QR code , power on the gateway.

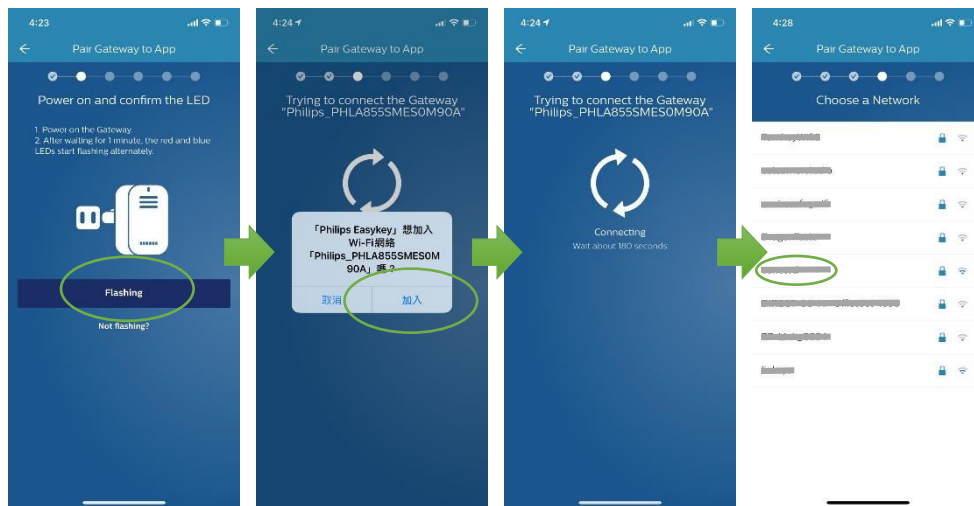


3.4 Gateway pairing: Purple light>Red light> Red Blue light , click “Flashing” .

3.5 Press “OK” .

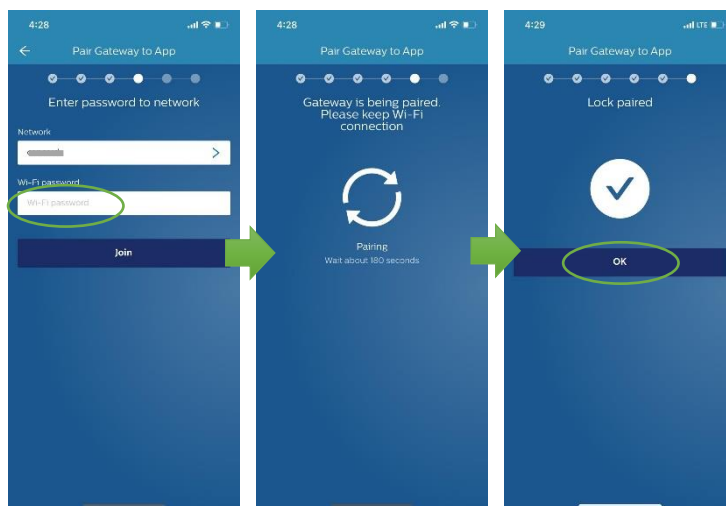
3.6 Pair Gateway to APP.

3.7 Choose your 2.4GHz Wi-Fi Network.



3.8 Enter your Wi-Fi password.

3.9 Press “ok” after lock paired.



3.10 Press “Assign it”

3.11 Press “Done” after assignment success.

3.12 Confirm your gateway is online.

3.13 Wi-Fi unlock shown on the devices page. Hold the blue circle button to unlock.

