

# Philips EasyKey 702E APP Connection



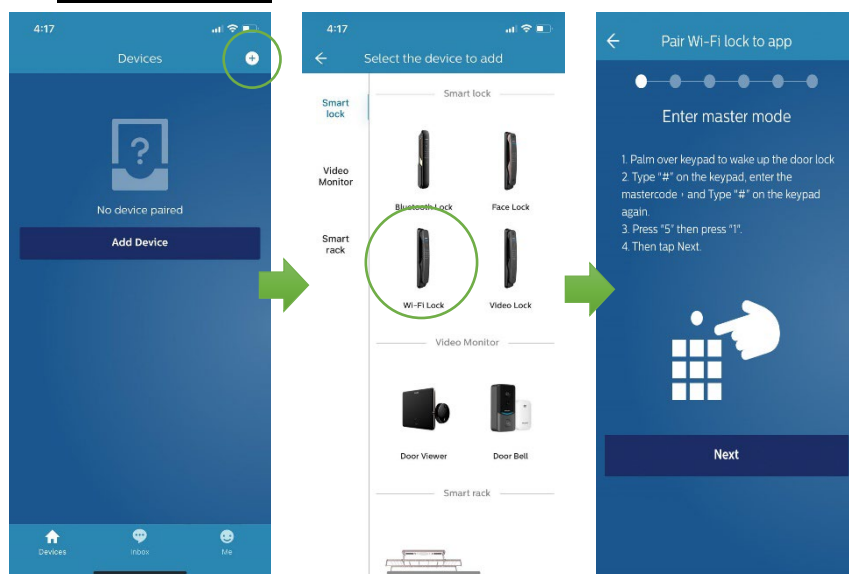
## 1. Sign up

a new account

1.1. Download 「Philips Easykey」 App.

1.2. Sign up a new account and log in.

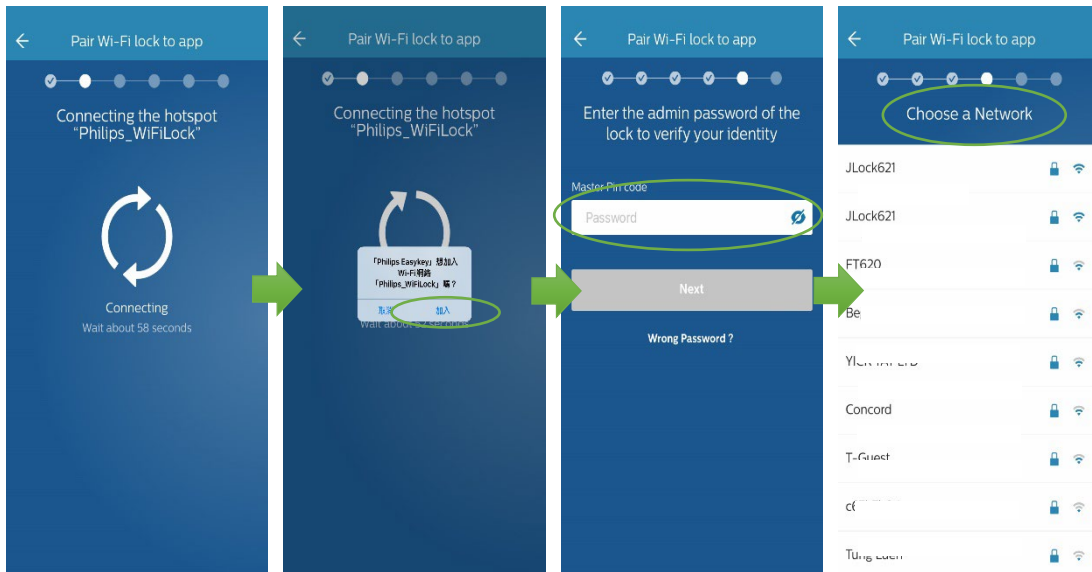
## 2. Connect Wi-Fi



2.1 Enter the Front Page then Click the 「+」 symbol.

2.2 Click the Wi-Fi Lock icon.

2.3 Touch to wake up the door lock keypad, enter # # then enter password # and enter 5 1, press next.

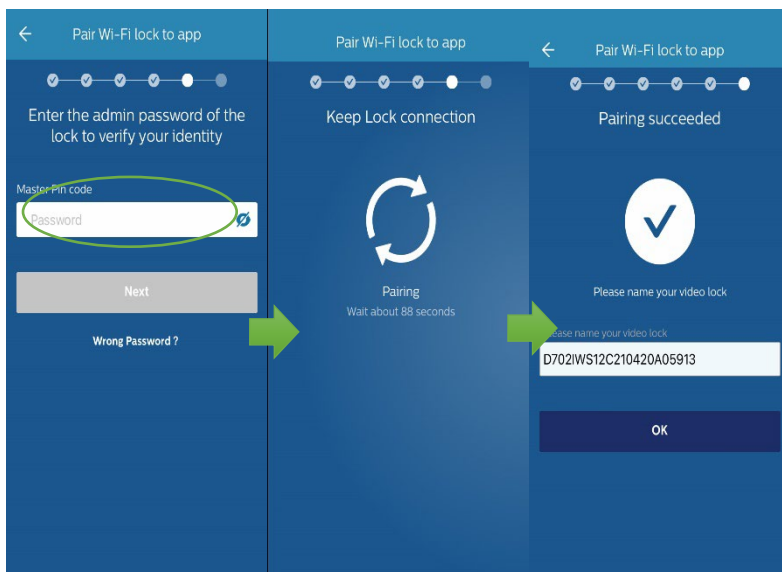


2.4 Wait the Wi-Fi connection.

2.5 If the connection fails, please add the Wi-Fi link: "Philips\_WifiLock" on the mobile manually.

2.6 Enter the account password and press "Next".

2.7 Choose the network and enter the Wi-Fi password.



2.8 Wait the connection again.

2.9 If you connect successfully, you can rename your door lock.

Other tips : Don't give the permission to others.