

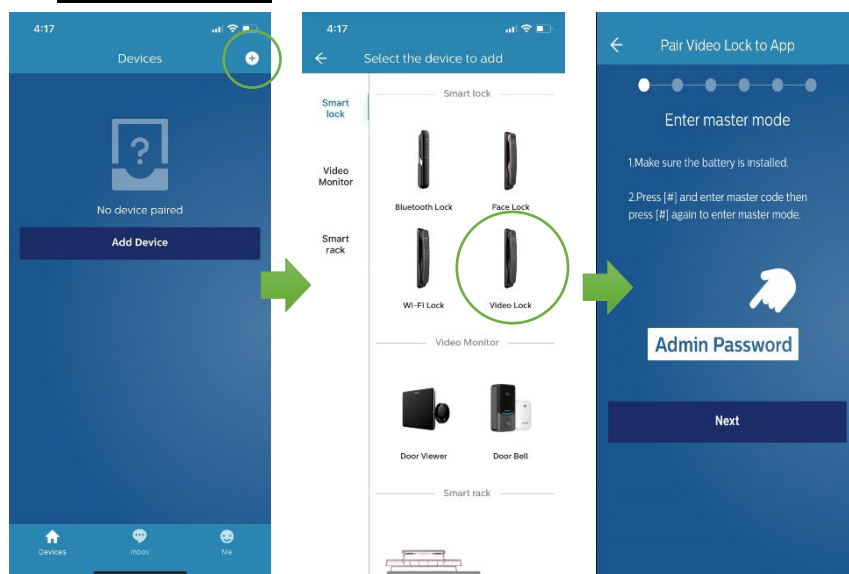
Philips EasyKey 702V APP Connection



1.1. Download 「Philips Easykey」 App.

1.2. Sign up a new account and log in.

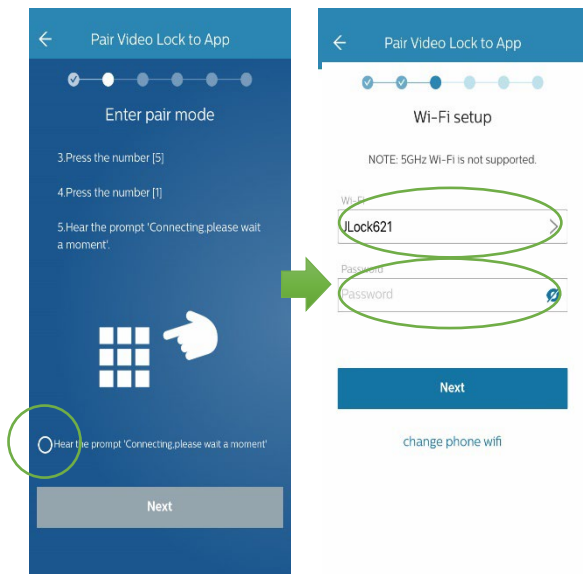
2. **Connect Wi-Fi**



2.1 Enter the Front Page then Click the 「+」 symbol.

2.2 Click the video lock icon.

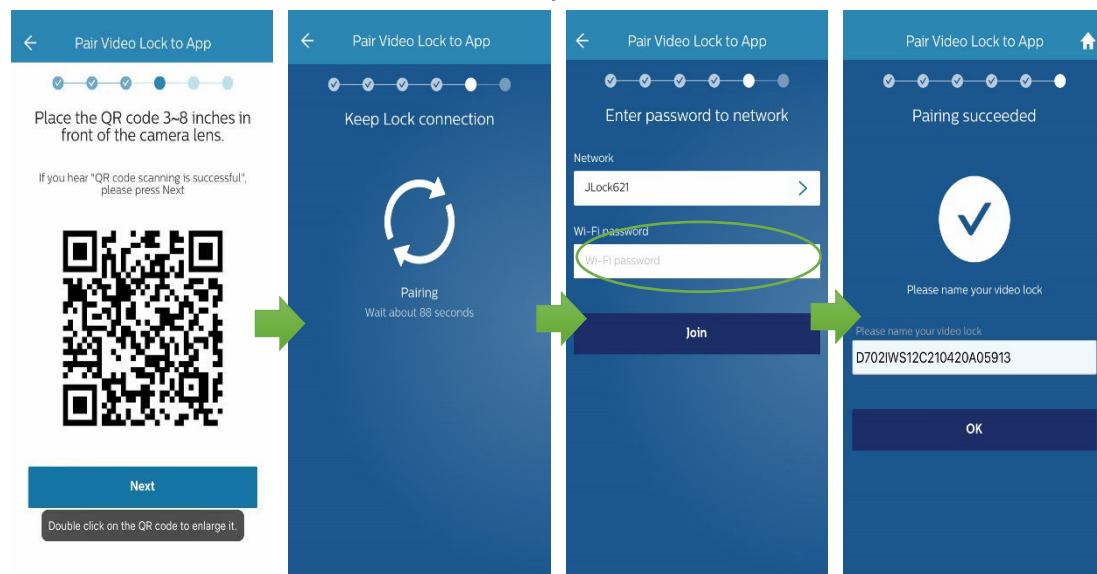
2.3 Touch to wake up the door lock keypad, then enter # # then enter admin password # and enter 5 and 1, press next.



2.4 If you hear the voice “connecting, please wait a moment”, then click the item “connecting, please wait a moment”.

2.5 Press “Next”.

2.6 Choose the network and enter the password. Press “Next”.



3 Scan QR Code

- 3.1 Put the QR code in front of the door lock’s camera.
- 3.2 After the voice message “Success of scanning”, then press “Next”.
- 3.3 Wait the connection again.
- 3.4 Enter the network password and press “Next”.
- 3.5 If you connect successfully, you can rename your door lock.

Other tips: Don’t give the permission to others.