

Philips EasyKey ALPHA-VP APP Connection



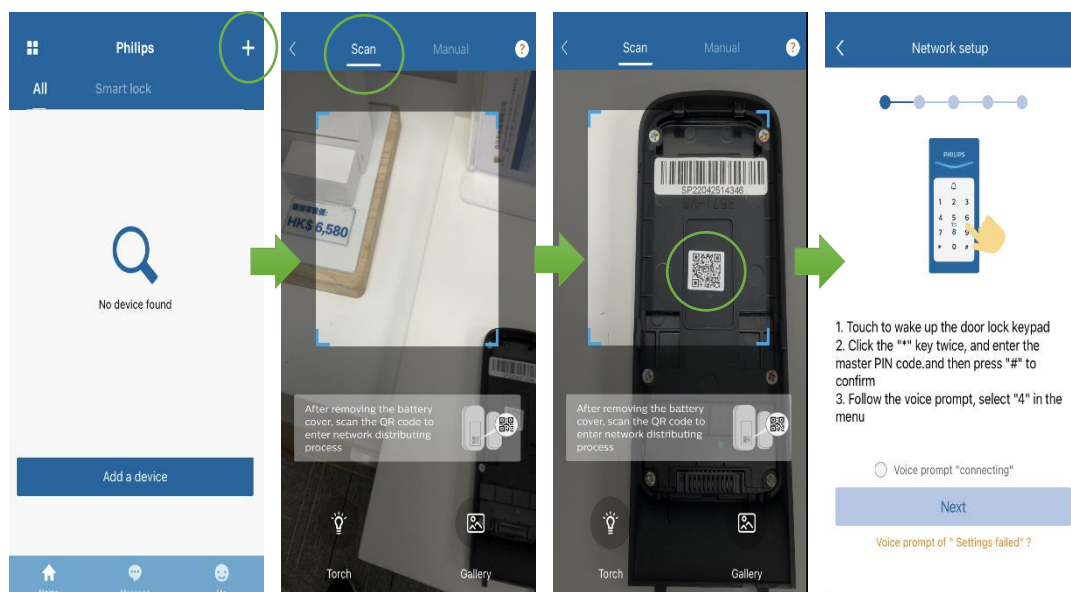
1. Sign account.

Up a new

1.1. Download 「Philips Easykey Plus」 App.

1.2. Sign up a new account and log in.

2. Connect Wi-Fi.



2.1 Enter the Front Page then Click the 「+」 symbol.

2.2 Click "Scan".

2.3 Scan the QR code on the battery.

2.4 Touch to wake up the door lock keypad, then enter ** then enter password # and enter 4, press next.

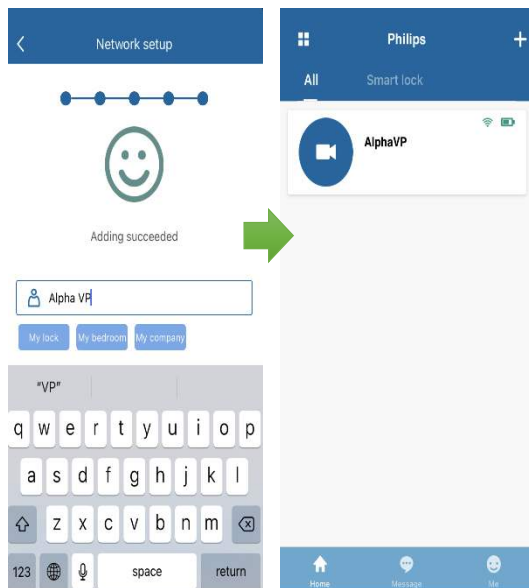


2.5 Enter Wi-fi Name and password, then press “Next” (only support 2.4GHz Wireless Network).

2.6 Put QR code in front of the camera of Alpha-VP in order to connect them.

2.7 After the connection, enter the password then press “Next”.

2.8 If you connect successfully, you can rename your door lock.



Other tips: Don't give the permission to others.