

4 General Operation

On/Off

1. Long press the function button for 3 seconds to turn on the device.
2. Long press the function button for 3 seconds could also turn off the device.

Sleep / Wake up mode

1. This device has an automatic timeout feature to reduce battery consumption. If the user does not input anything within the defined time, the screen will turn off.
2. Short press the function button could wake up the device.

Reset

If the device fails to turn on or stops responding, please use a needle or paper clip to shortly press the reset button to reboot the device. Long press the reset button for two seconds to turn off the device.

❗ Resetting does not affect the data storage or time settings. Do not reset the device during normal operation, as this may lose the data stored in the device.

Touch Screen

You could use your fingers to click or slide to set up all the needed settings.

Outdoor checking

Wake up the device to enter into the interface, and then press the outdoor checking icon or short press the function button to view the instant scenes outside the door.

Charging

When this device is charging, a lightning icon will appear on the top of the touch screen to show the battery status. The indicator ring will glow in red when it is charging, and it will glow in green when fully charged.

5 Setup instruction

1: APP download and installation

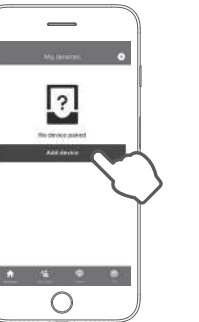
Android: Search and download the "Philips EasyKey" from Google Play.

IOS: Download the Philips EasyKey from the App Store.

2: Sign up for registration and log in.



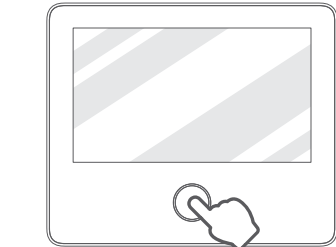
3: Click on "Add a device".



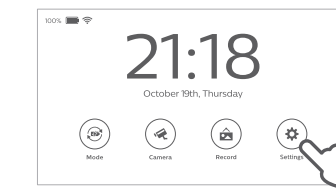
4: Select "Smart door viewer".



5: Please connect the host to the sub-unit, and then long press the function button for 3 seconds until entering the interface.

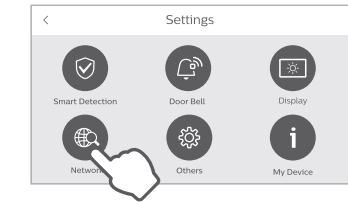


6: Press "Settings" to enter to the next interface.



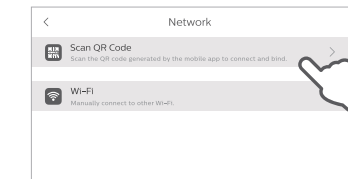
- 🔋 Power-saving mode switching
- 📷 Camera Preview
- 📁 Check the visitors/alarms record
- ⚙️ Time, doorbell, theme and network connection settings.

7: Click on the Network icon to enter into next menu.

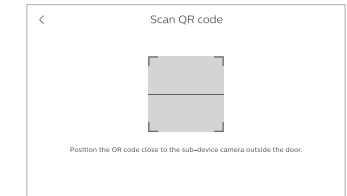


- ✔️ Time, human detection sensitivity, alarm mode and alarm sound settings
- 🔊 Door Bell and volume settings
- 📺 Theme, time-out and brightness settings
- 📶 WiFi connection and device binding settings
- 🕒 Date & time, language and anti-prying alarm settings
- 📄 Check device version, firmware information, storage and restore to default settings.

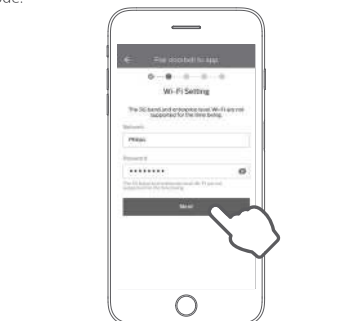
8: In the interface of Network, click on "Scan QR Code" could enter into next menu.



9: Enter into "Scan QR Code" Interface



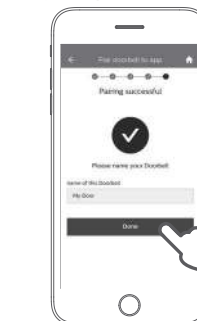
10: Open the door viewer and enter into the "Scan QR Code" menu via the mobile phone, then choose available WIFI, input password and click on "Next" to generate a QR code.



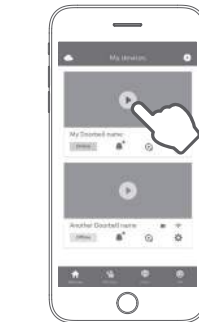
11: Use the camera of sub-unit to scan the QR code generated in last step.



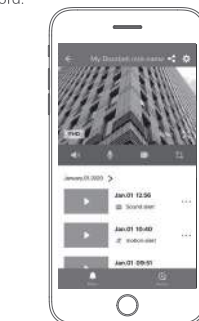
12: Please wait for 1-2 minutes during the connection process. After successfully adding the device, click on "Done" to bind the device.



13: Check your device list on the "Device" page.

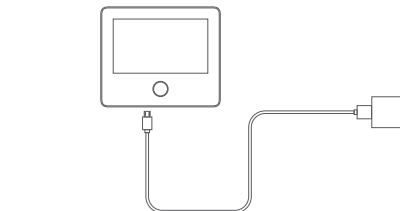


14: Click on any binding device could check the device access record.

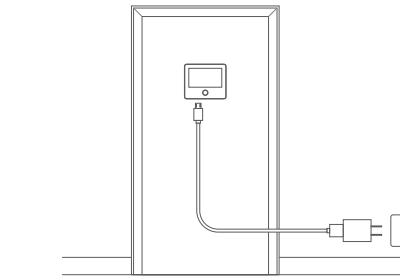


6 Host Charging

When the battery is running low, you can remove the host from the magnetic stand after turning it off, then use a power adapter to charge it, install the host on the magnetic stand and turn on the device.



If you do not want to remove the host, you can take the power socket to the nearest position of the smart door viewer and connect the power adapter to charge.



Precaution

- Do not expose this product to the harsh environment with high temperature, high humidity, dust, salt spray, rain, and water splashing, it may damage the device.
- Do not press too hard on the lens of the sub-unit and the black round cover from the top, it may cause hardware damage.
- During the installation process, please not to pull out the connecting cable of the sub-unit, and prevent the cable from being scratched or cut off (Improper operation that causes cable damage is not covered by the warranty).
- Please use the authorized power adapter included in the packaging. The use of unauthorized adapter may result in failure to charge or system damage.
- Do not connect the sub-unit when the host stays on, otherwise, the camera may be connected abnormally. If there is an abnormality, please reconnect the sub-unit when the host is turned off.
- This product supports the 2.4GHz WLAN only, please make sure that this product is within the coverage of the WiFi, and position the WiFi router as close as possible to this product.
- This product is for home-use anti-theft monitoring. It is not applicable to other illegal premises.